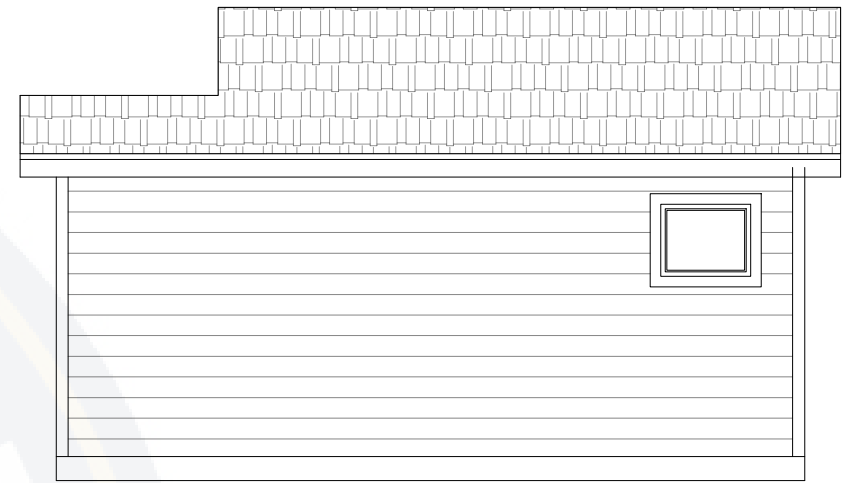




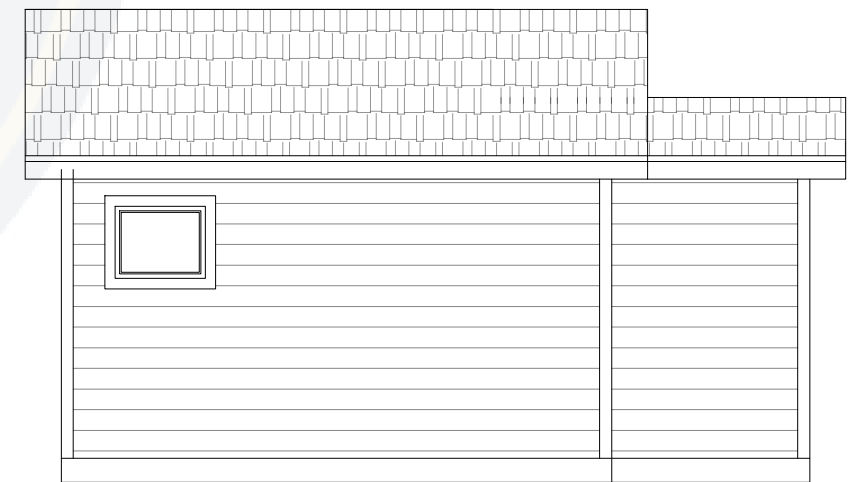
○ FRONT ELEVATION  
SCALE:  $3/16'' = 1'-0''$



○ RIGHT ELEVATION  
SCALE:  $3/16'' = 1'-0''$



○ REAR ELEVATION  
SCALE:  $3/16'' = 1'-0''$



○ LEFT ELEVATION  
SCALE:  $3/16'' = 1'-0''$